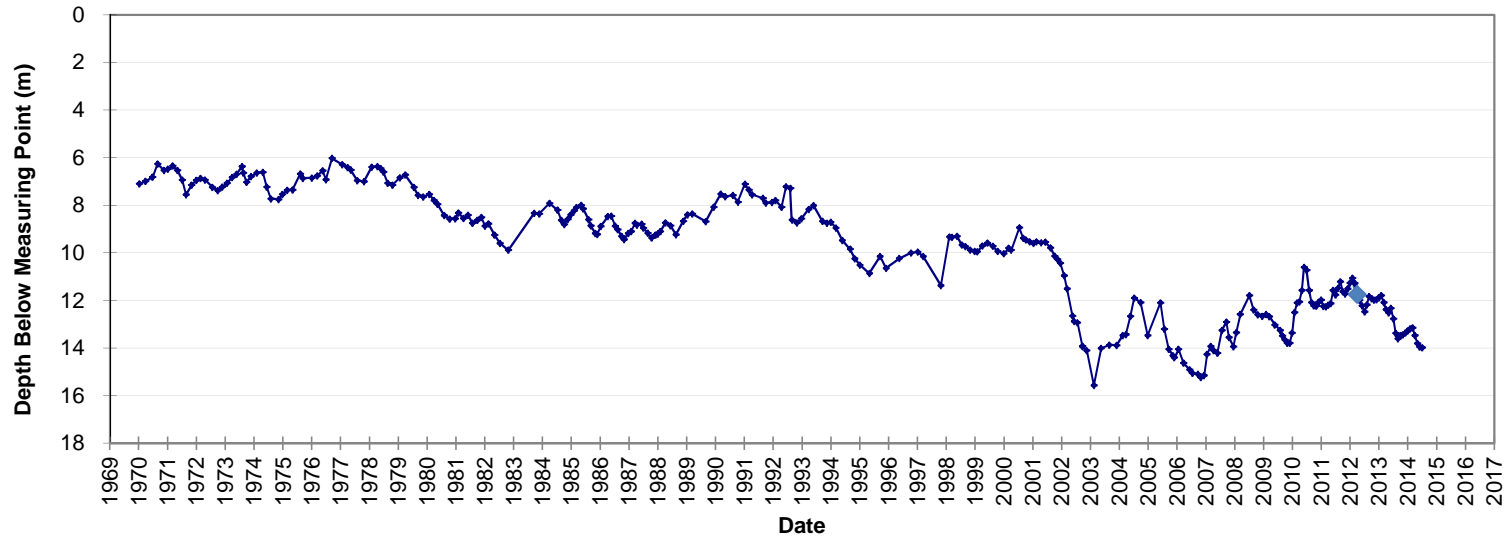
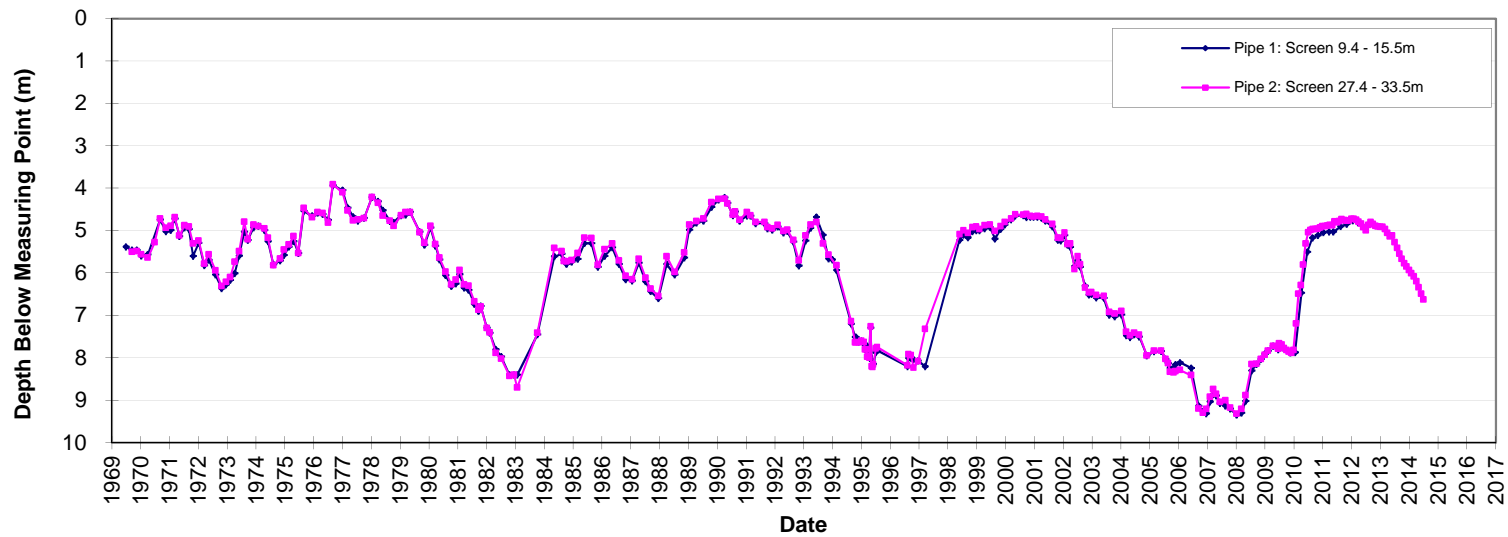


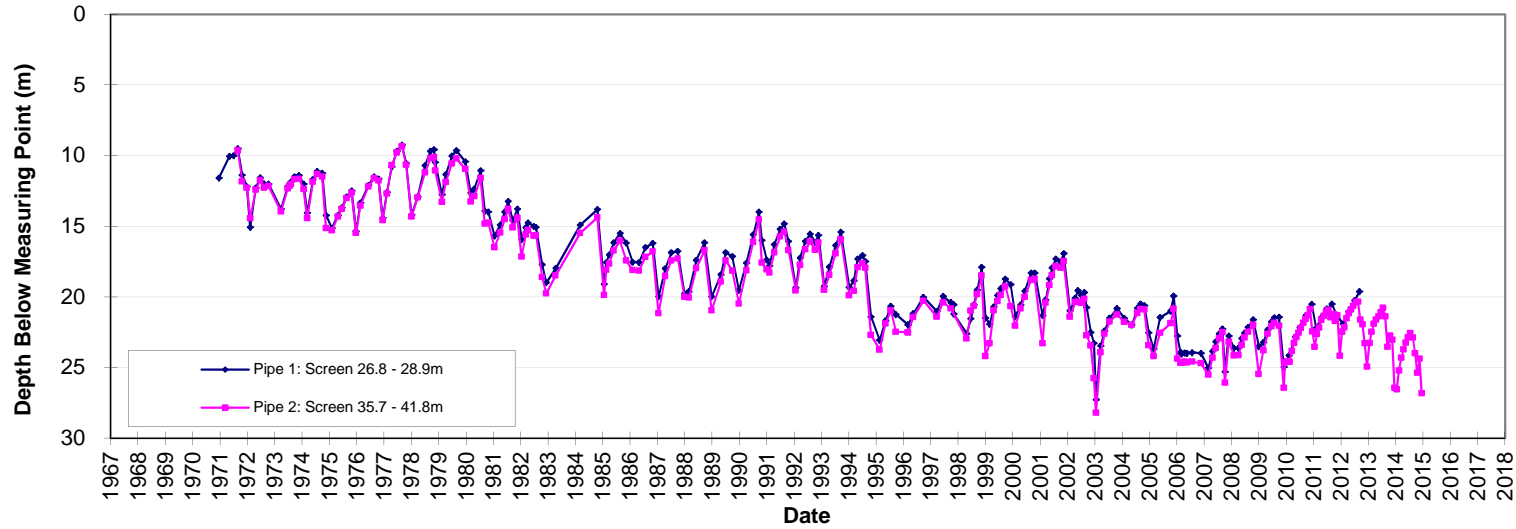
Hydrograph GW030000 Upper Namoi Zone 3/8 - Breeza



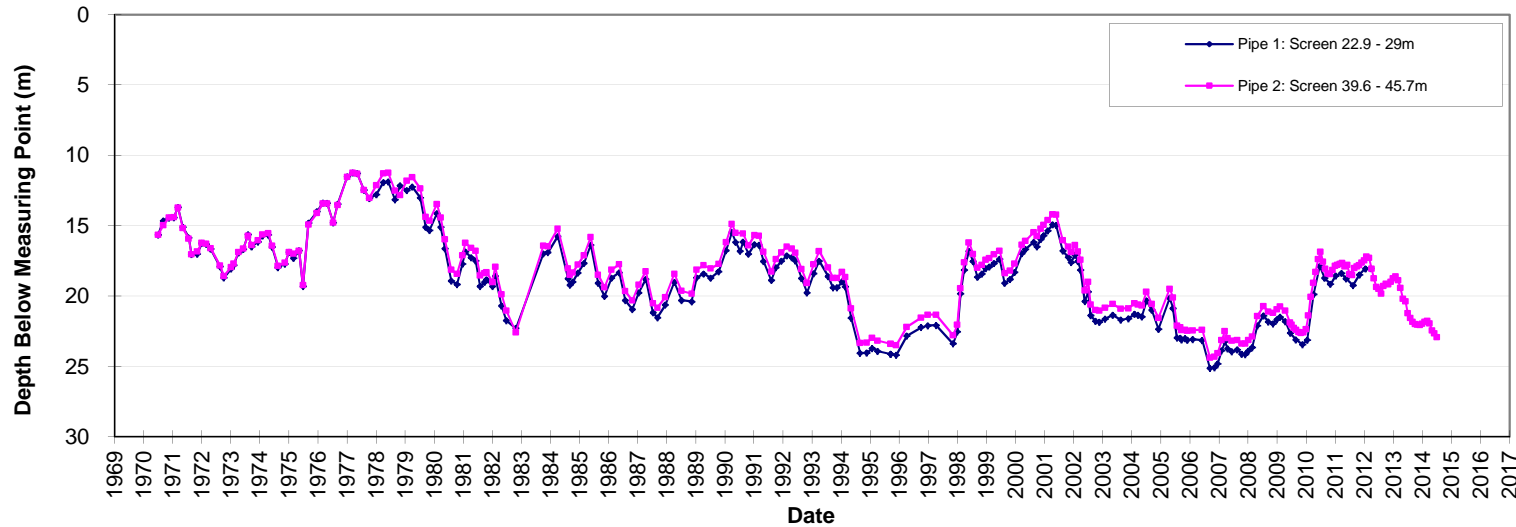
Hydrograph GW030029 Upper Namoi Zone 1 - Colly Plains



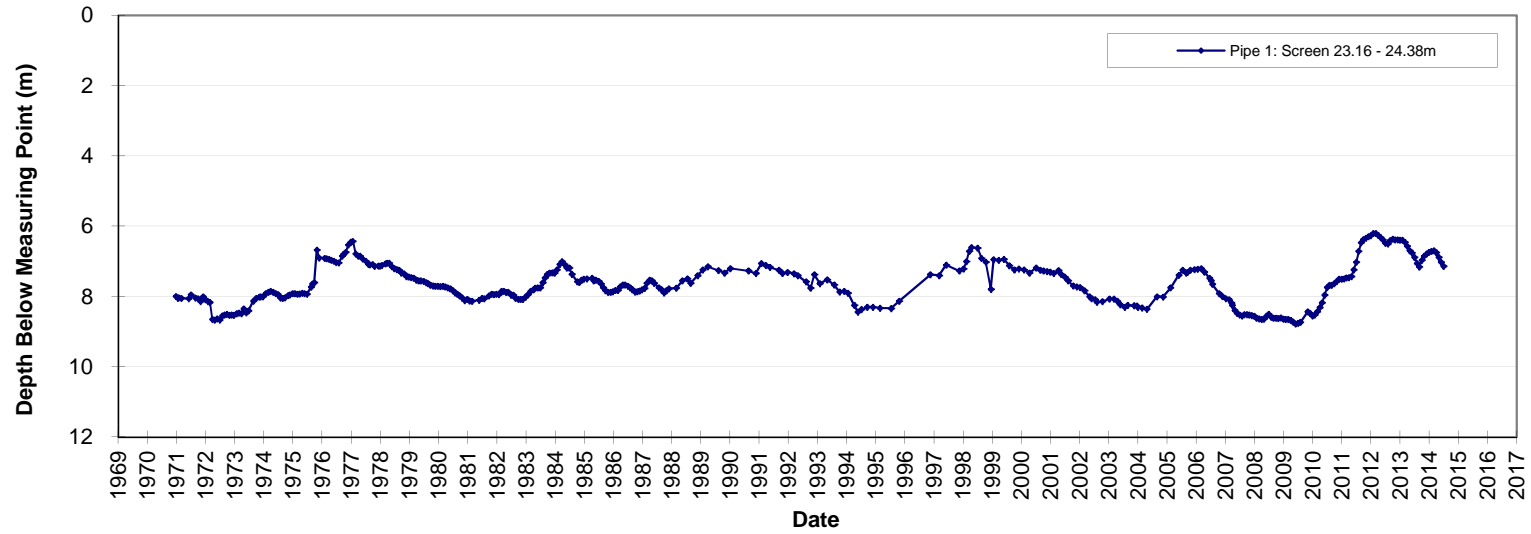
Hydrograph GW030083 Upper Namoi Zone 8 - Premmer Rd



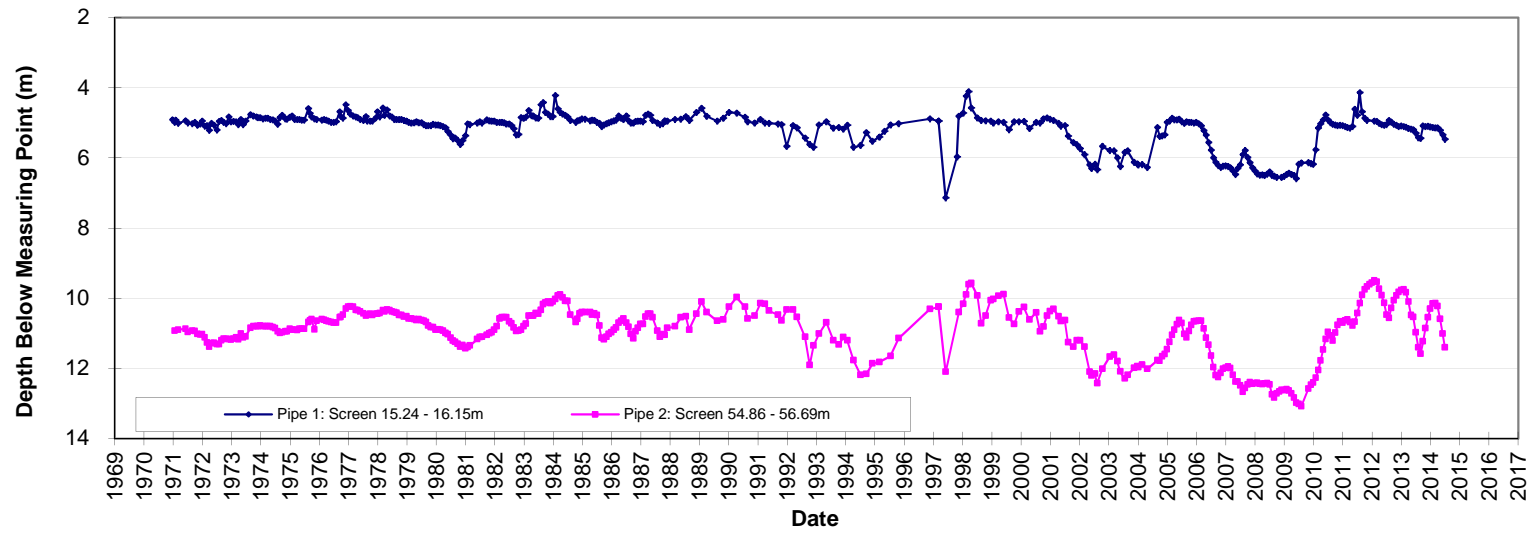
Hydrograph GW030087 Upper Namoi Zone 8 - Feedlot



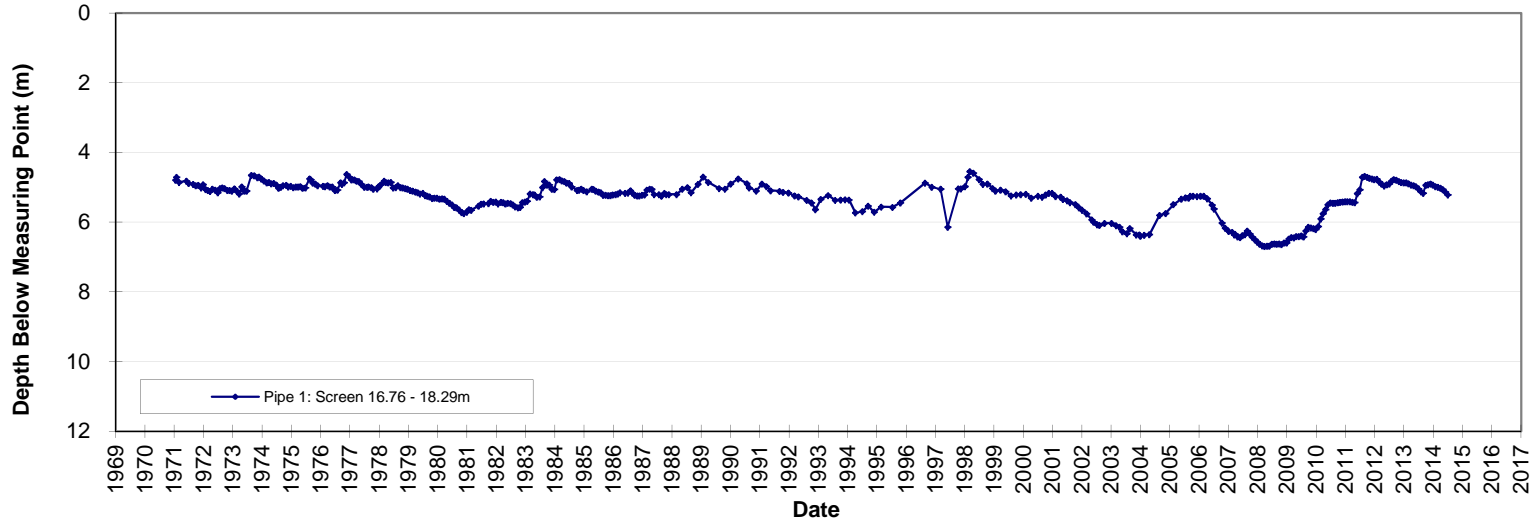
Hydrograph GW030129 Upper Namoi Zone 11- Mardigras Rd



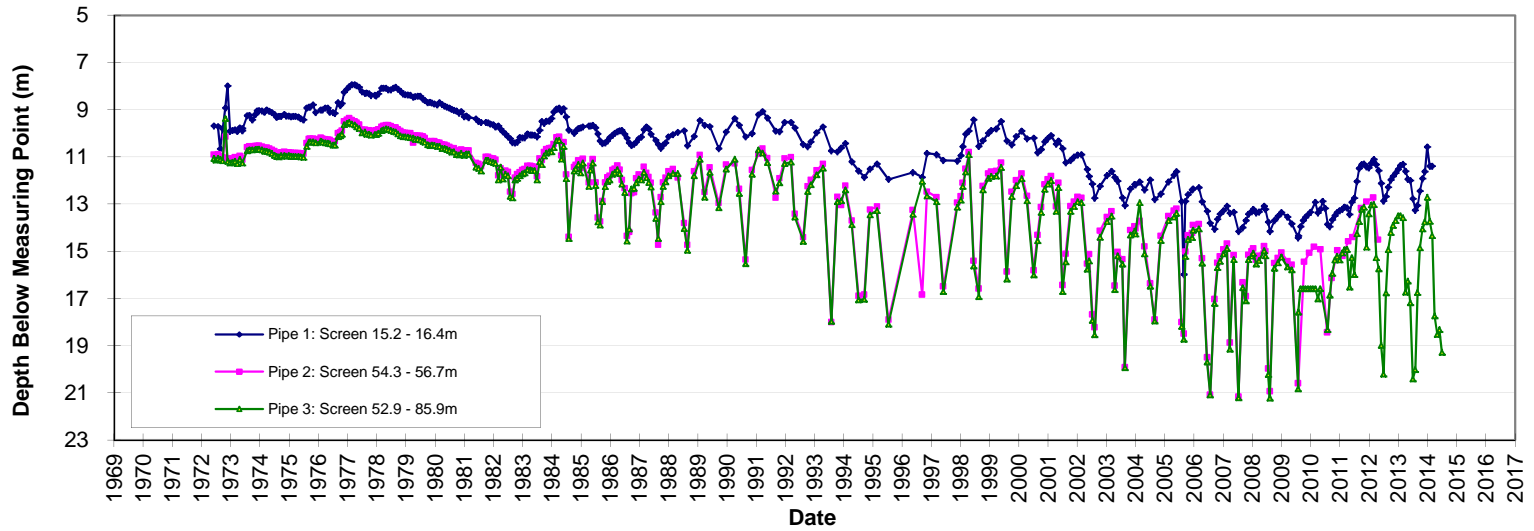
Hydrograph GW030130 Upper Namoi Zone 11- Mardi Gras



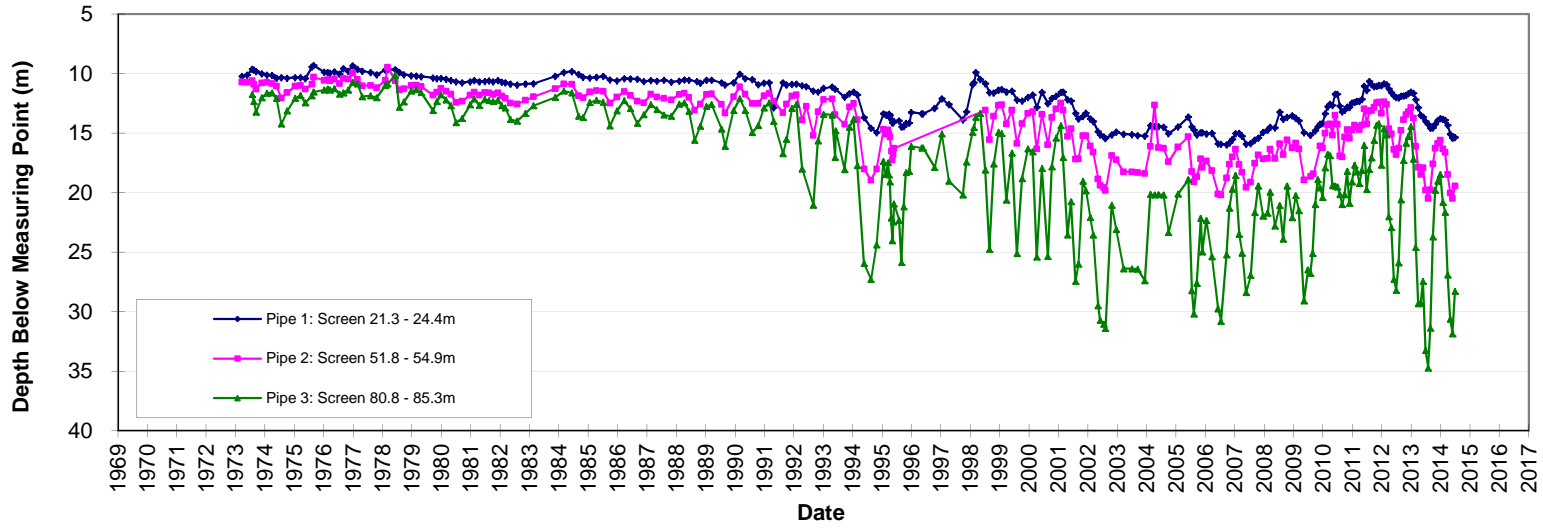
Hydrograph GW030131 Upper Namoi Zone 11 - Harparary Rd



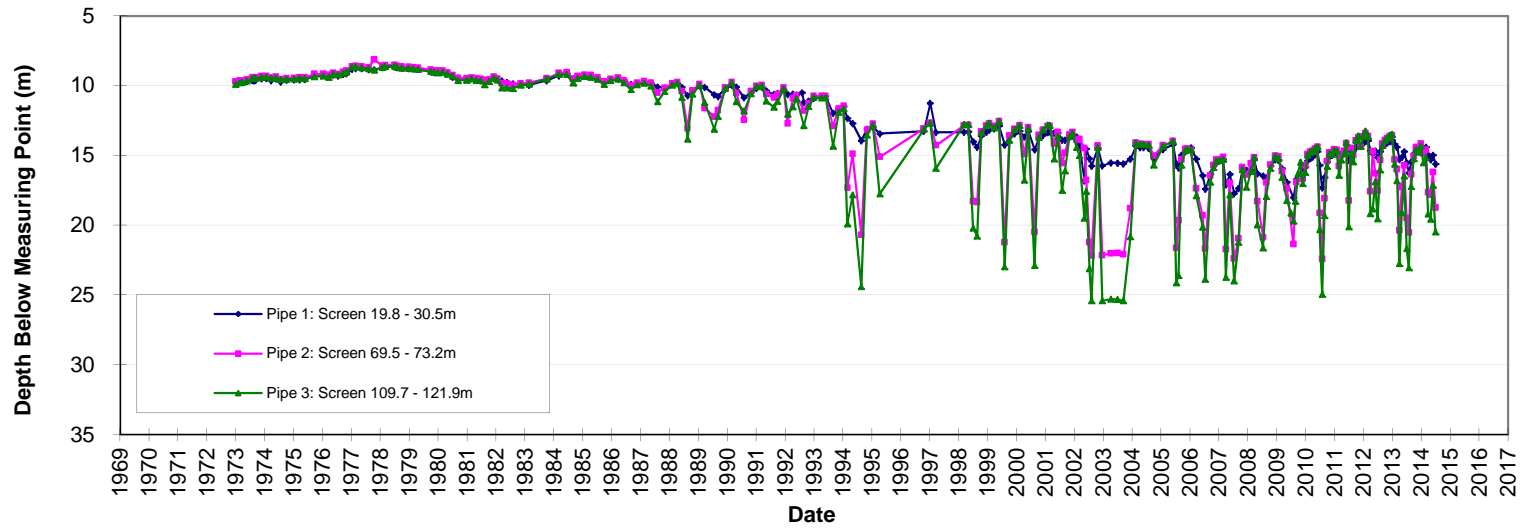
Hydrograph GW030233 Upper Namoi Zone 5 - Currawidgen



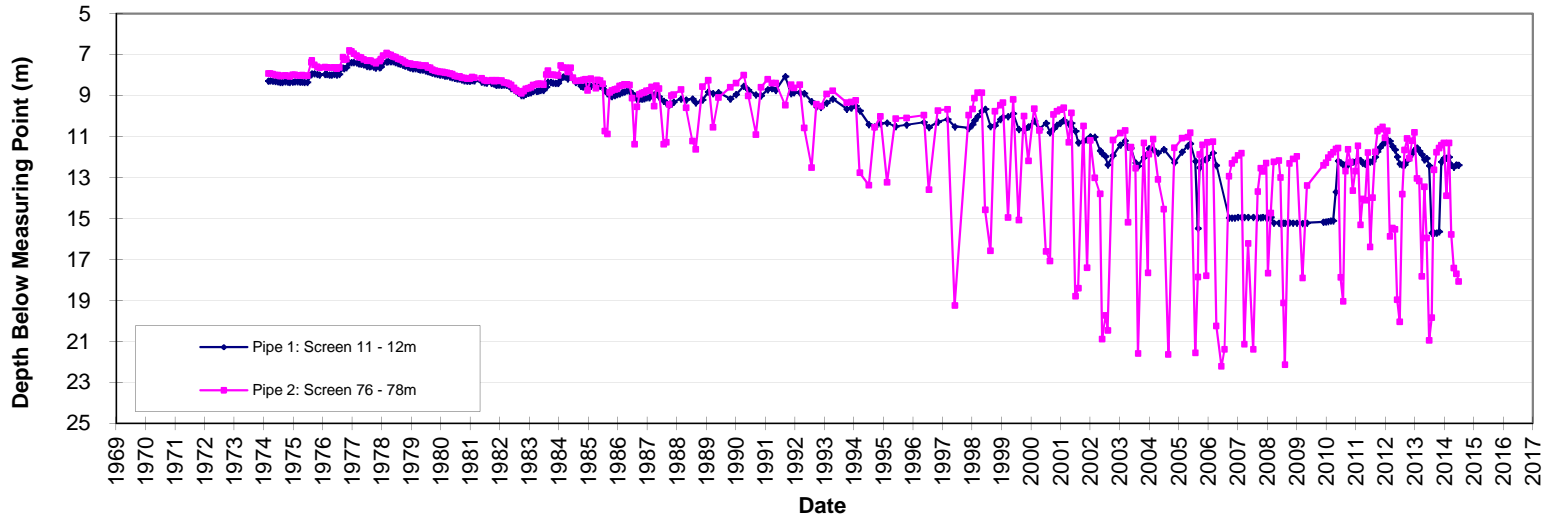
Hydrograph GW030306 Upper Namoi Zone 3/4 - Carroll



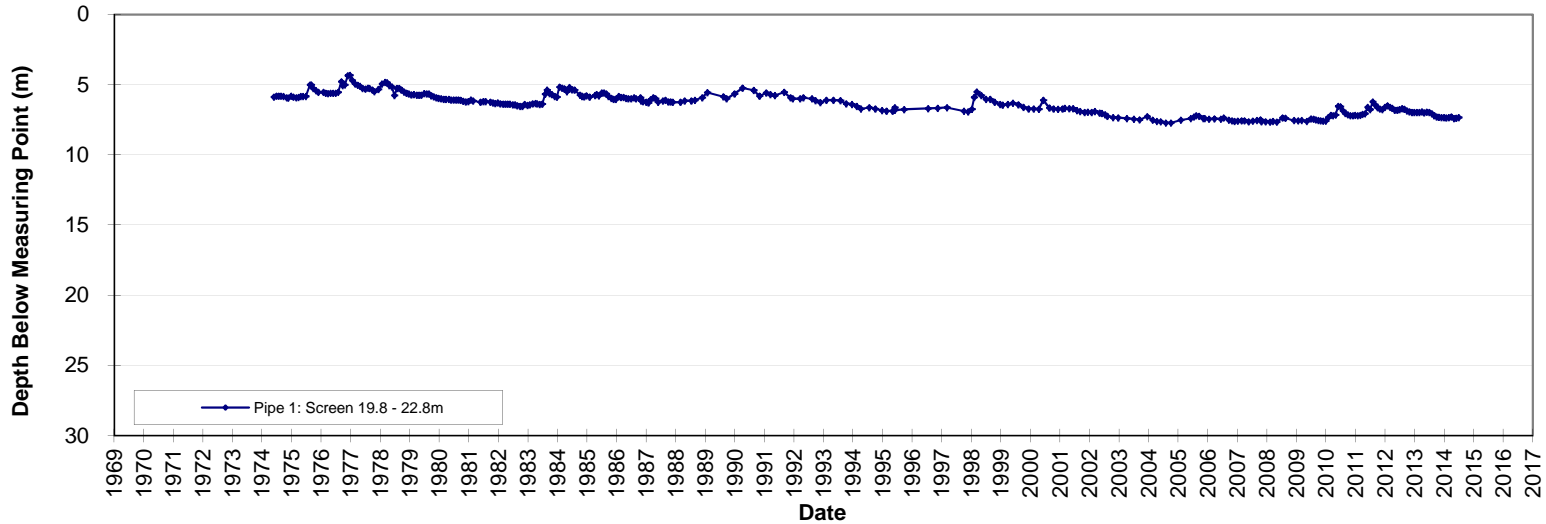
Hydrograph GW030344 Upper Namoi Zone 4 - Kelvin Rd



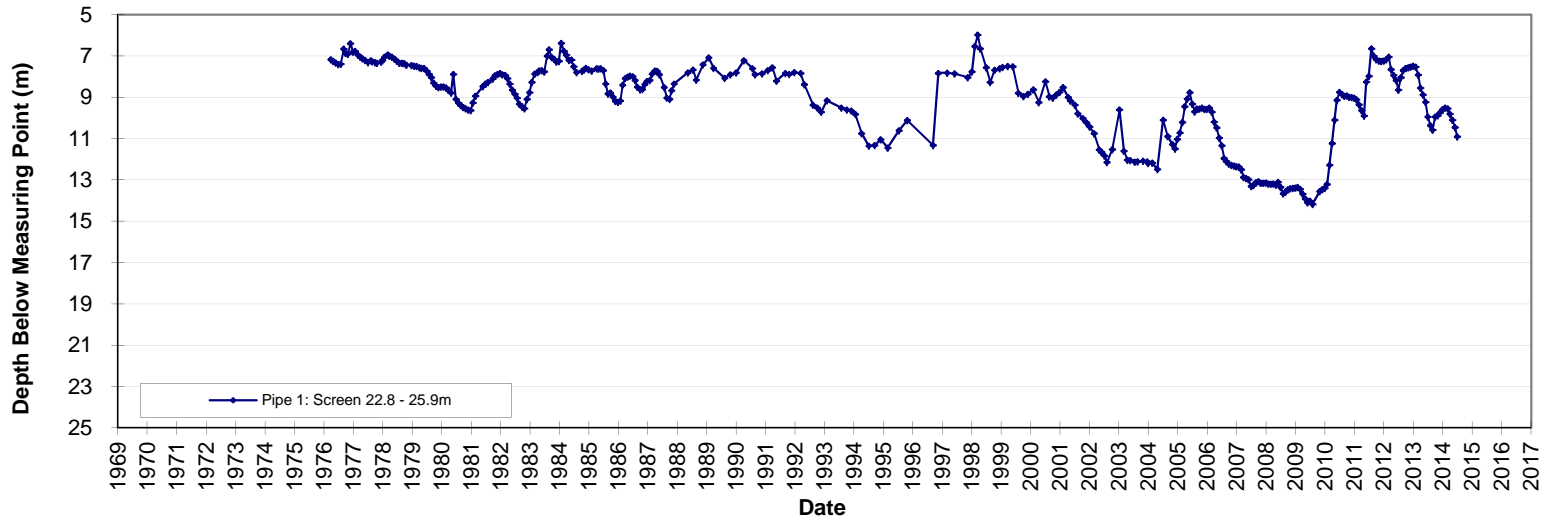
Hydrograph GW036005 Upper Namoi Zone 5 - Harparary



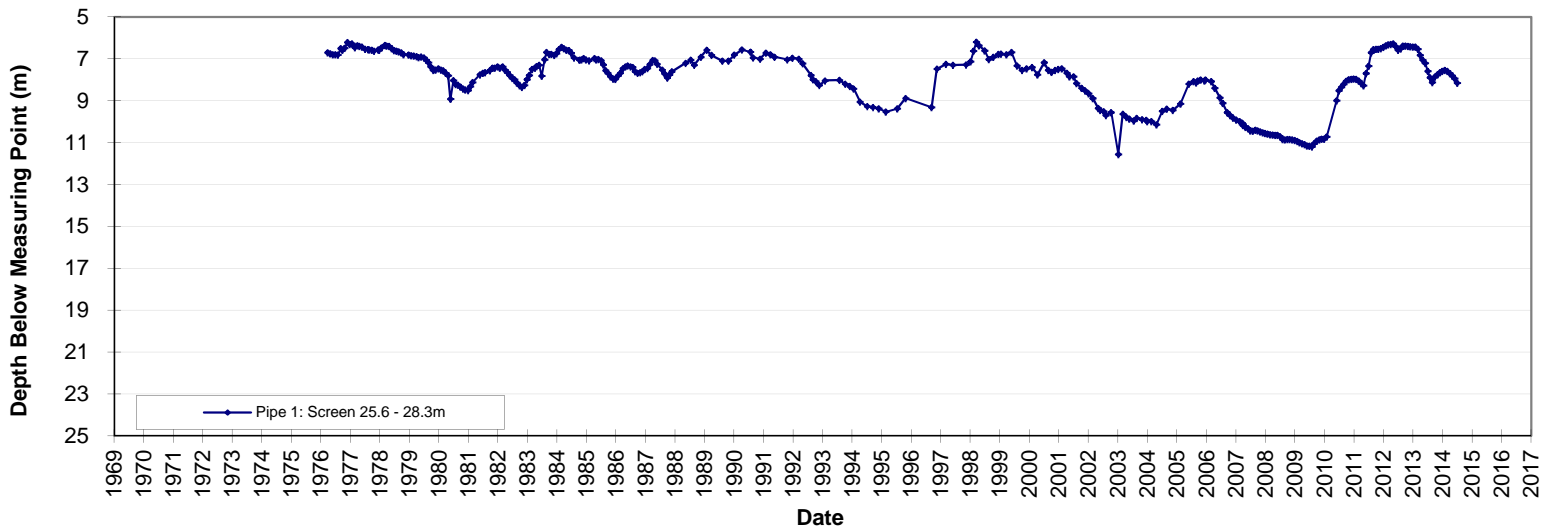
Hydrograph GW036092 Upper Namoi Zone 4 - Robertsons



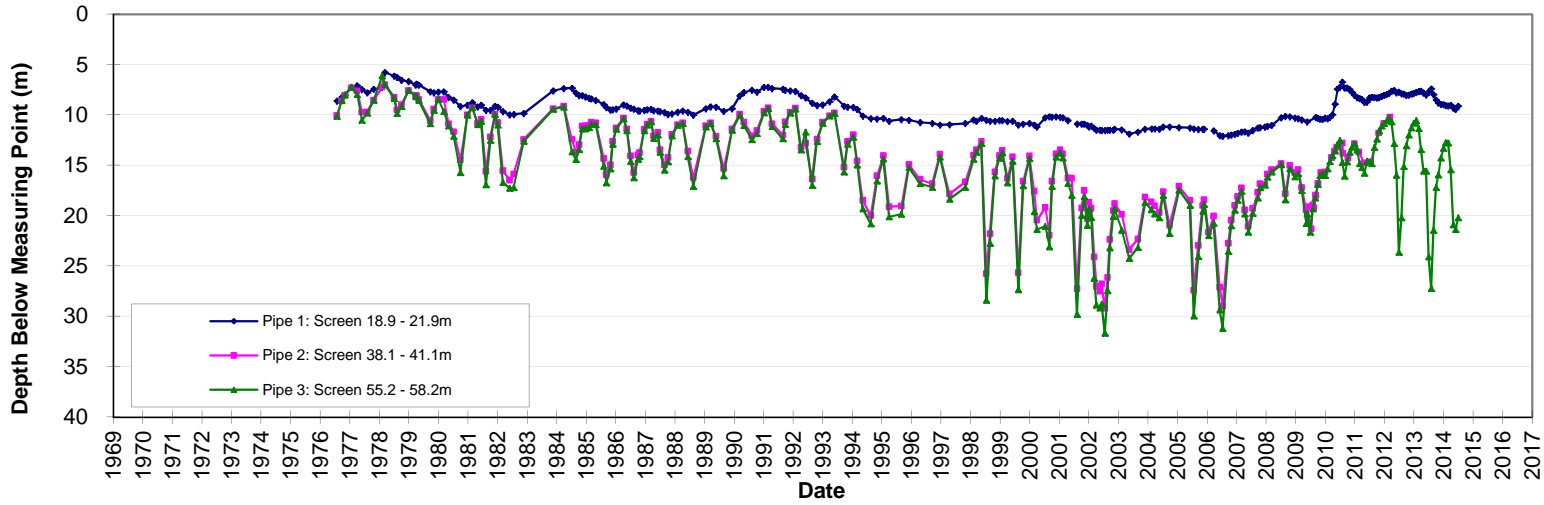
Hydrograph GW036186 Upper Namoi Zone 5- Maules Merriendi Crossing



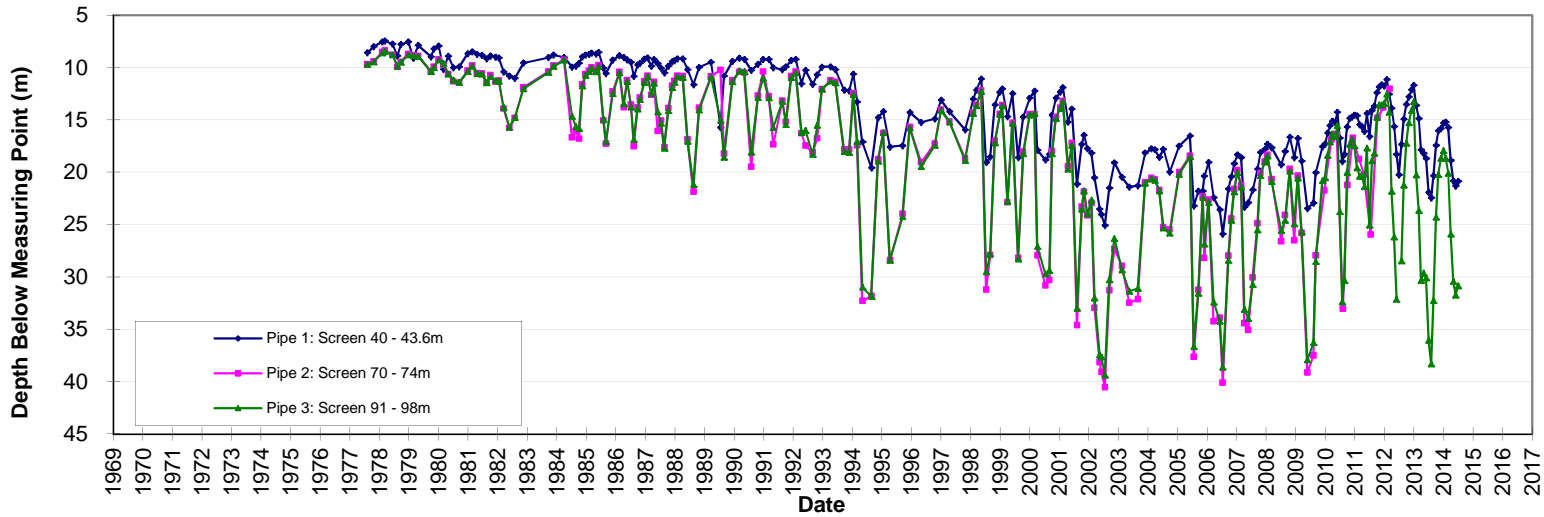
Hydrograph GW036187 Upper Namoi Zone 5 - Maules Merriendi Rd



Hydrograph GW036213 Upper Namoi Zone 3 - Battery Hill



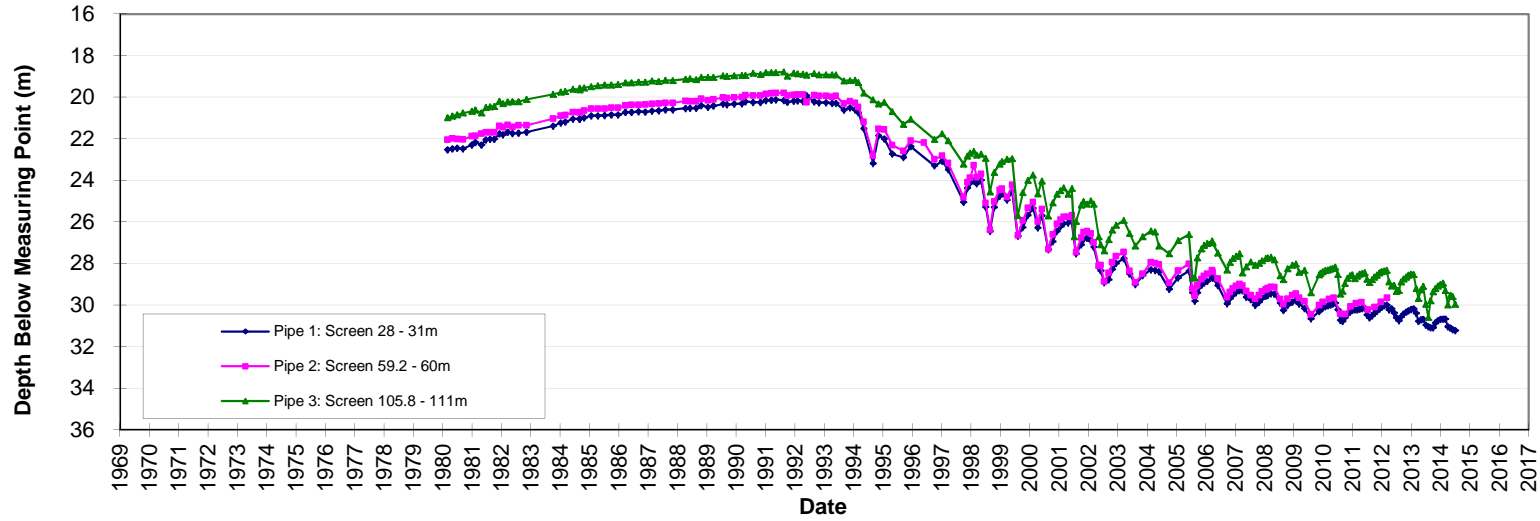
Hydrograph GW036215 Upper Namoi Zone 3 - Redback Rd



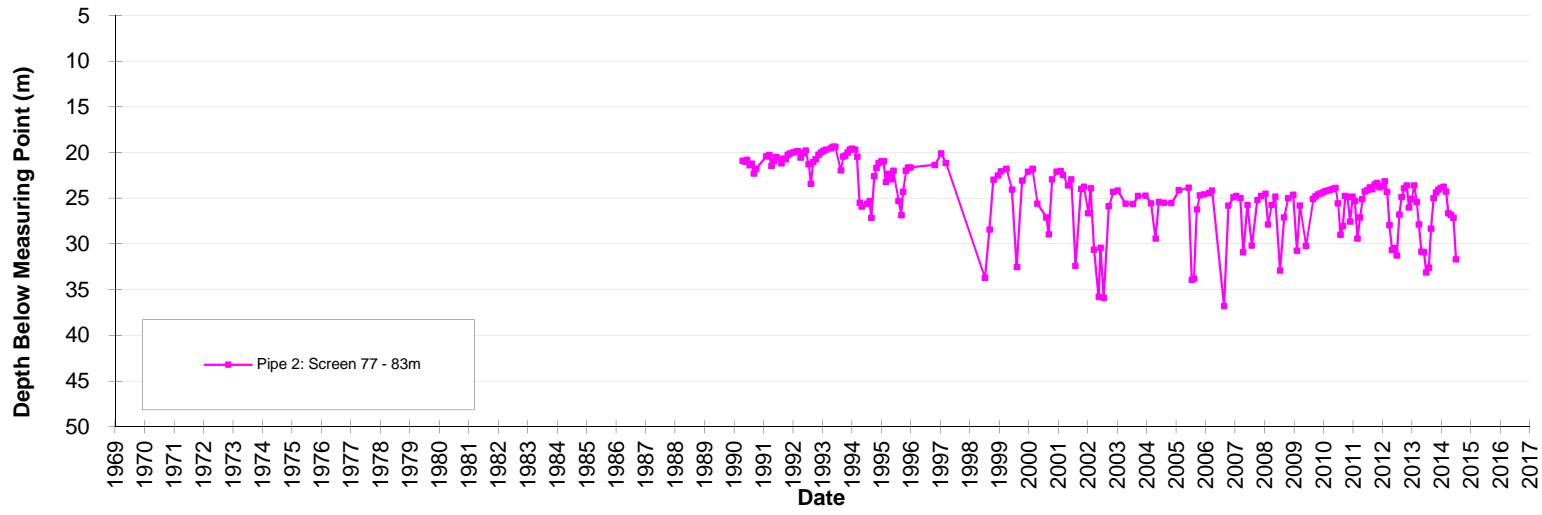
Hydrograph GW036415 Upper Namoi Zone 12 - Barwick Rd Kelvin



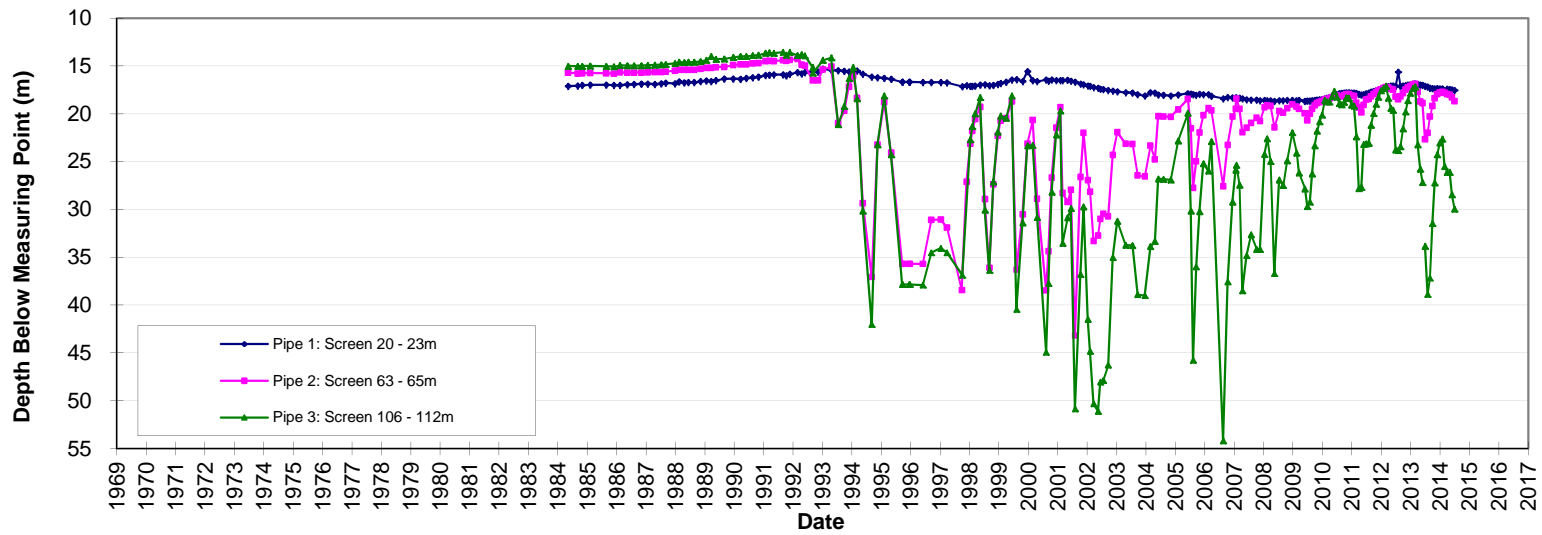
Hydrograph GW036418 Upper Namoi Zone 12 - Prairies Rd



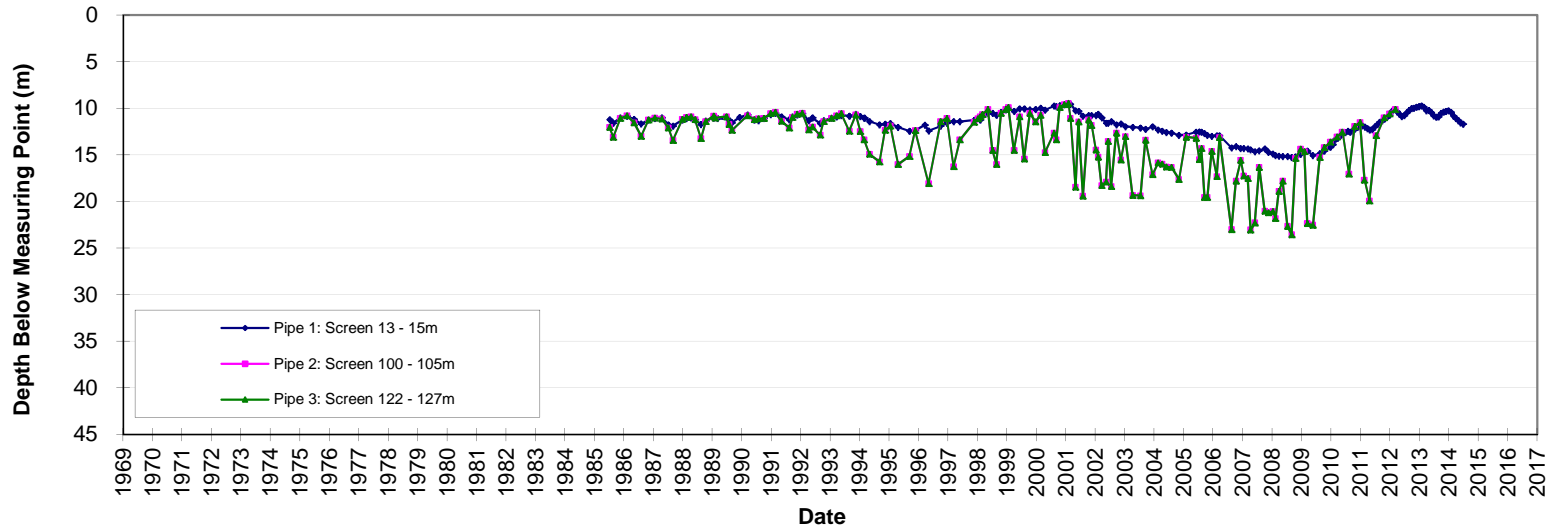
Hydrograph GW036478 Upper Namoi Zone 2 - Willala



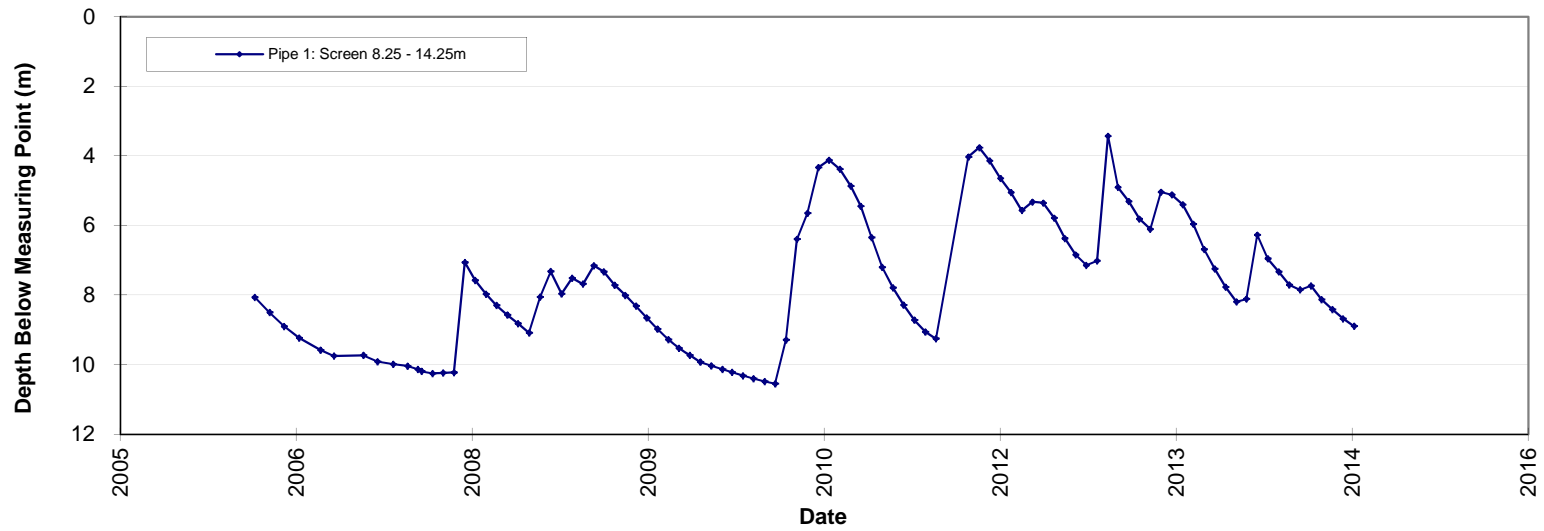
Hydrograph GW036515 Upper Namoi Zone 2 - Ghoolendaadi



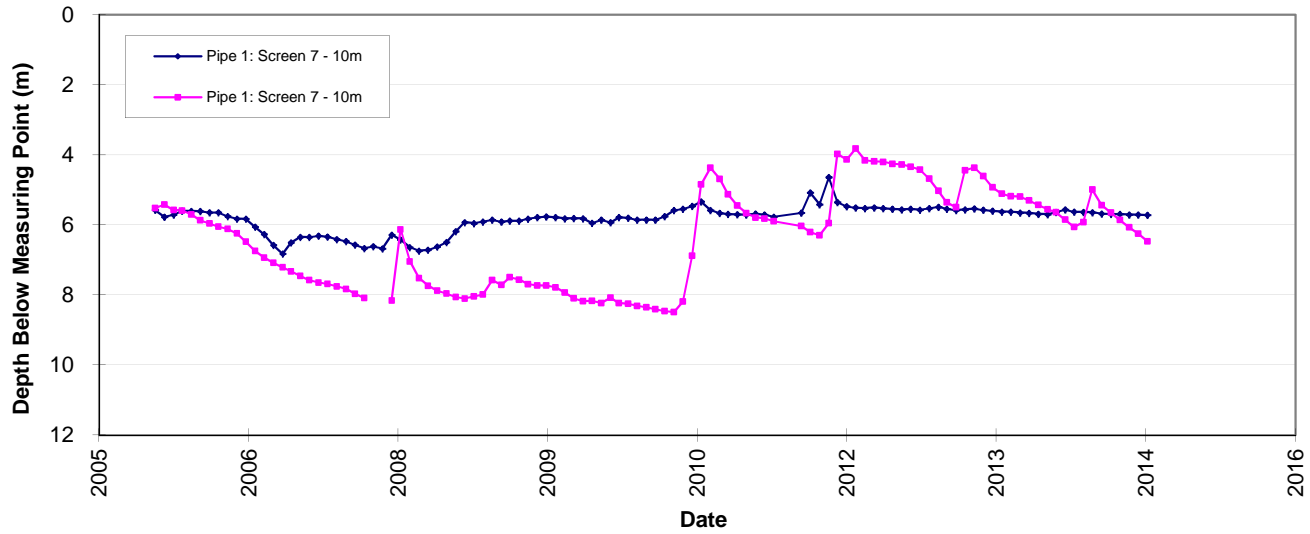
Hydrograph GW036600 Upper Namoi Zone 2 - Binnalong Rd



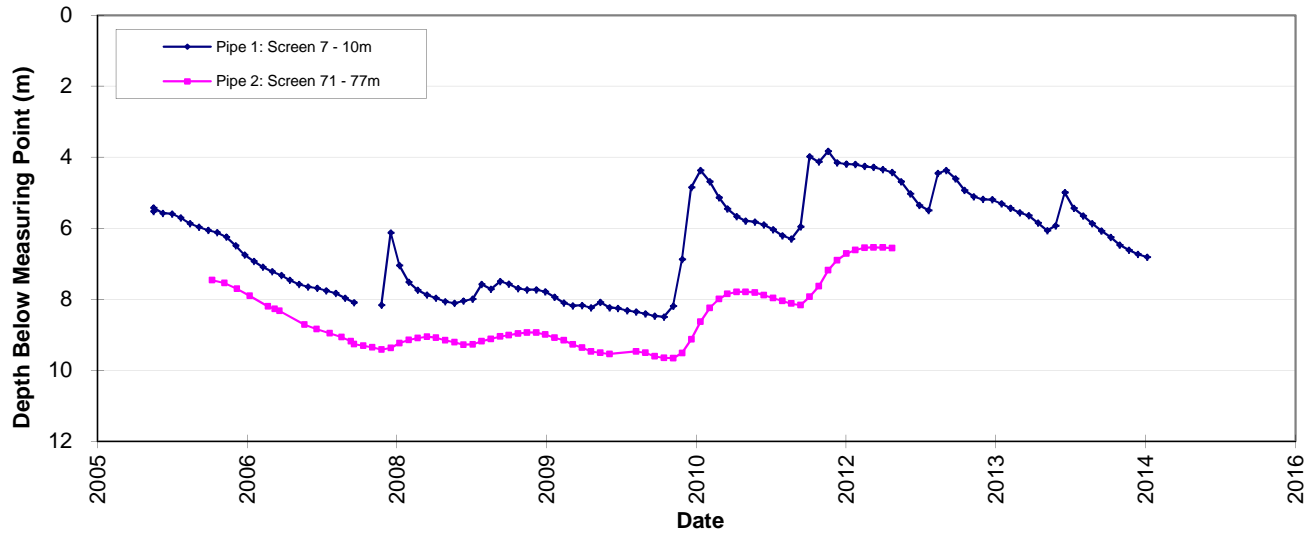
Hydrograph GW041027 Upper Namoi Zone 11 - Thornfield



Hydrograph GW967137 Upper Namoi Zone 11- Maules Creek Elfin Crossing



Hydrograph GW967138 Upper Namoi Zone 11- Maules - Green Gully



DISCLAIMER

Bore data has been supplied to the NSW Office of Water (Department of Primary Industries) by drillers, licensees and other sources and may not be verified or complete. Interpretation of data should be undertaken by a qualified hydrogeologist.

While every reasonable effort has been made to ensure the accuracy of the data, you should satisfy yourself as to the accuracy of the data before relying on it. The State of New South Wales, its agents and employees, disclaim any and all liability to any person in respect of anything or the consequences of anything done or omitted to be done in reliance upon the whole or any part of this data.

